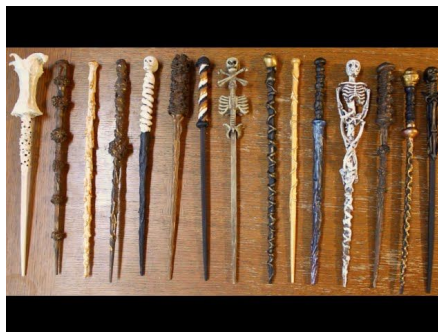


# Decorate Your Wand

While you wait to hear back about what your wand is made of, you can take time after camp to make your wand match who you are even better- by decorating it!



Step 1: Find the following supplies

- Wand
- Drop Cloth (to cover table)
- Paint
- Paint Brush
- Cup (for water)
- Paper Towel (for drying paint brush)

Step 2: Begin decorating your wand! Some students find it helpful to paint the wand in a base coat, then let it dry.

Step 3: Once your wand's base coat dries, you can add in smaller details using different colors!

Step 4: Before using your wand, make sure it is completely dried! This may take a day!

Step 5: Get creative! You may have supplies at your house to make your wand extra special. Is there anything you have at home you could add to make your wand fit you as a wizard??

Step 6: Once you have a wand, you can practice all different kinds of charms and spells with it!